



# YG

## SINGLE POINT LOAD CELL

### *applications*

- Low Force Measurements
- Hopper & Net weight Weighing
- Platform and Belt Conveyor Scales
- High Moment/Off-Center Loads
- OEM and VAR Solutions

### *features*

- 100 kg to 1000 kg Capacities
- Low Profile/Compact Size
- Excellent Performance
- 0.02% Accuracy Class-NTEP
- Application Versatility
- Aluminum Element
- IP67 Environmental Sealing
- Low Price/Performance Ratio
- Two Year Warranty

SENTRAN, LLC  
California Commerce Center  
4355 Lowell Street  
Ontario, CA 91761-2225

Toll Free: 1(888) 545-8988  
Phone: 1(909) 605-1544  
Fax: 1(909) 605-6305  
Email: [mail@sentranllc.com](mailto:mail@sentranllc.com)  
URL: [www.sentranllc.com](http://www.sentranllc.com)



NIST H-44 NTEP CERTIFIED "LEGAL-FOR-TRADE"

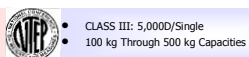
- CLASS III: 5,000D/Single
- 100 kg Through 500 kg Capacities

The YG Series is a high performance, bonded foil strain gage load cell constructed of a transducer-quality aluminum alloy (YG6). The YG6 is designed to accurately measure compression loads for single cell applications in the capacity range of 100 kg to 1000 kg. The field proven dual-guided cantilever beam design readily tolerates high moments induced by angular, eccentric and off-center loading, with minimal sensitivity to these anomalies. To achieve a sealing rating of IP67 (thoroughly sealed against airborne particles and the effects of immersion in water up to 1 meter.) proprietary, multi-redundant environmental barriers are integrated to protect the strain gage area and all electronic components. Additional protection is provided by the "wrap around" stainless steel cover, which also serves to enhance the aesthetics of the YG6 as a component of an assembly or measurement system. The cable is a durable polyurethane-jacketed cable, with a tin-copper braided shield for mechanical protection and to minimize the effects of RFI and EMI. The attributes of the YG6 Series makes it an ideal choice for low to medium range force measurements, small hopper and platform weighing, and O.E.M. weighing situations where a moment-compensated, well sealed, versatile and high performance load cell solution is needed. Non-standard or custom configurations can be accommodated consistent with solutions-driven requirements.

*Innovative Measurement Solutions*



**performance**



Rated capacities (kg):	100, 150, 250, 300, 500, 635, 800 & 1,000
Rated output (FSO)	2 mV/V ± 10%
Combined error	≤ 0.025 % FSO
Non-linearity	≤ 0.02 % FSO
Hysteresis	≤ 0.02 % FSO
Non-repeatability	≤ 0.01 % FSO
Moment Sensitivity	See Table Below
Maximum Moment	See Table Below
Creep (30 minutes)	≤ 0.03 % of load
Zero balance	≤ 3 % FSO
Zero return (20 minutes)	Better than 0.03 % FSO

**mechanical**

Material:	Aluminum Alloy
Finish:	Natural
Safe overload	Compression/Tension: 150% FSO Side load: 50% FSO
Ultimate overload	Compression/Tension: 300% FSO Side load: 100% FSO
Deflection	See Table Below
Weight	See Table Below

**electrical**

Input impedance	410 ± 10 ohms
Output impedance	350 ± 3 ohms
Insulation resistance	>5000 Megohms @ 50VDC
Excitation Voltage	10 V AC/DC (15 V maximum)
Cable Color code:	+ Excitation (green) - Excitation (black) + Output (red) - Output (white) Shield (bare)
Cable type	4-conductor; 22 AWG; tin-copper braided shield; polyurethane jacket
Cable termination	Finished conductors

**environmental**

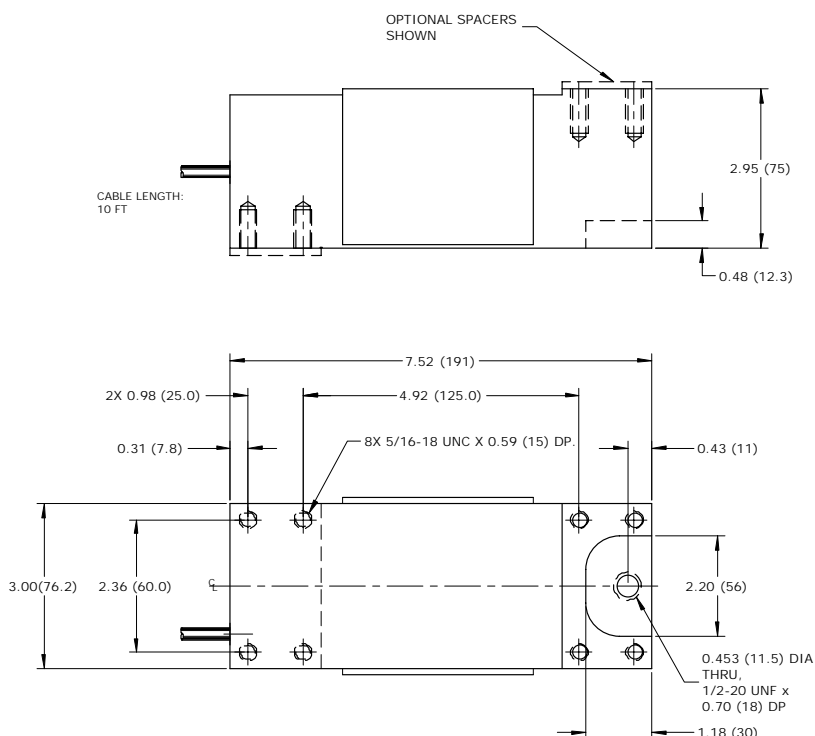


Temperature, operating	4 to +140 °F (-20 to +60°C)
Temperature, compensated	14 to +104 °F (-10 to +40°C)
Temperature effects:	Zero < 0.0015% FSO/°F < 0.0026% FSO/°C
	Output < 0.0008% of Rdg./°F < 0.0014% Rdg./°C
Sealing	IP67; Dust & limited submersion

**options**

Special cable lengths, MS connectors, Custom configurations, Steel or Stainless steel construction and Companion instrumentation.

**dimensions**



MAX MOMENT/ PLATFORM SIZE	MOMENT SENSITIVITY % READING PER INCH
12 INCH x CAPACITY 24 INCH x 24 INCH	0.002