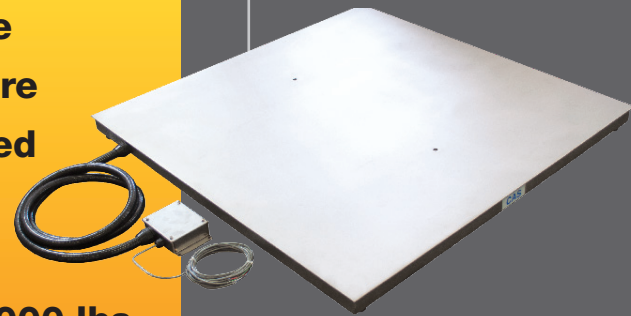




Washdown Low Profile Floor Scale

HFS-SS Series

The HFS-SS Series Low Profile Floor Scales are constructed of reinforced stainless steel and are available in a variety of configurations. Designed for longevity in the most demanding industrial applications, the HFS-SS Series is available in rated capacities ranging from 1,000 lbs. to 20,000 lbs.



The HFS-SS Series is a stainless steel, low profile, high performance floor scale. The HFS-SS Series is designed to accurately measure loads in capacities ranging from 0-1,000 lbs to 0-10,000 lbs. Designed to provide years of dependable use in hostile industrial applications where easy cleaning and sanitizing procedures are required, the HFS-SS Series is available with optional removable polyethylene or diamond deck plate top. The HFS-SS Series platform's structural integrity insures dependability and accuracy by properly transferring weight to the scale's stainless steel load cells to provide repeatable, accurate weights. For applications that require maximum accessibility to all scale areas, the HFS PT, a stainless steel reinforced scale frame with a one (1) inch thick USDA/FDA approved removable polyethylene top is also available. Other available options include: Captive ball leveling feet, Hardened steel and stainless steel hermetically sealed load cells, Locator lag down brackets, Easy six (6) degree incline lock in place ramps - designed to fit all four sides of any HFS-SS floor scale and Poly top lift off ramps which allow for maximum access for thorough cleaning. In addition, the HFS-SS features an easy install stainless steel pit frame, bumper guards, fork lift skid package, running gear, side/top access to onboard j-box, indicator/printer stands, FM approved load cells/jbox, custom sizes and capacities and quick disconnect cables. The HFS-SS Series has the capabilities to handle your most demanding weighing applications.

APPLICATIONS

- In Process Weighing
- Gain-In-Weight & Loss-In-Weight
- Food/Beverage/Pharmaceuticals
- Shipping & Receiving
- Warehouse/Inventory Control
- Pallet & Crate Weighing
- General Purpose Weighing

FEATURES

- Stainless Steel Construction
- Smooth Type 304 Stainless
- .25" Thick Deck Plate
- Optional USDA/FDA Approved Removable Polyethylene Deck Top
- Available in 2' X 2' to 6' X 10' Deck Sizes
- 20' Home Run Cable For Connection To Indicator or Process Weight Controller
- Easy Access Adjustable Leveling Feet
- Environmentally Protected To IP66 Rating
- Tolerates 100% End Loading & 200% Overloading
- NTEP Approved 5,000 Divisions
- Optional Onboard J-box, Ramps, Bumper Guards, Side Rails, Pit Frame And More



For more information call **1-888-545-8988**

SENTRAN, LLC 4355 LOWELL STREET, ONTARIO, CA 91761, U.S.A.

888-545-8988 T: 909-605-1544 FAX: 909-605-6305 www.sentranllc.com

HFS-SS Series Specifications

Innovative Measurement Solutions

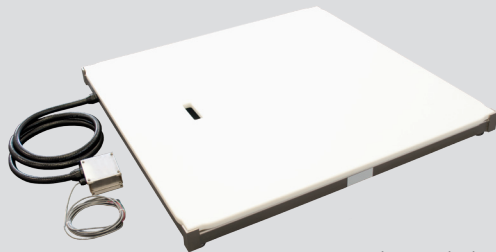


HFS SS MODELS			
MODEL	PLATFORM SIZE	CAPACITY	LEGAL FOR TRADE
HFS - SS2424-01	24" x 24" x 3"	1,000 lbs	No
HFS - SS2424-02		2,500 lbs	
HFS - SS3030-01	30" x 30" x 3"	1,000 lbs	No
HFS - SS3030-02		2,500 lbs	
HFS - SS3636-01	36" x 36" x 3"	1,000 lbs	No
HFS - SS3636-02		2,500 lbs	
HFS - SS3636-05		5,000 lbs	
HFS - SS4848-01	48" x 48" x 3"	1,000 lbs	No
HFS - SS4848-02		2,500 lbs	
HFS - SS4848-05*		5,000 lbs	Yes
HFS - SS4848-10*		10,000 lbs	
HFS - SS4860-05*	48" x 60" x 3"	5,000 lbs	Yes
HFS - SS4860-10*		10,000 lbs	
HFS - SS4872-05*	48" x 72" x 3"	5,000 lbs	Yes
HFS - SS4872-10*		10,000 lbs	
HFS - SS6060-05*	60" x 60" x 3"	5,000 lbs	Yes
HFS - SS6060-10*		10,000 lbs	
HFS - SS6060-20*		20,000 lbs	
HFS - SS6084-10*	60" x 84" x 4"	10,000 lbs	Yes
HFS - SS6084-20*		20,000 lbs	

*NTEP C.O.C.12-083

HFS SS POLY TOP MODELS			
MODEL	PLATFORM SIZE	CAPACITY	LEGAL FOR TRADE
HFS - SSP2424-01	24" x 24" x 3.75"	1,000 lbs	No
HFS - SSP2424-02		2,500 lbs	
HFS - SSP3030-01	30" x 30" x 3.75"	1,000 lbs	No
HFS - SSP3030-02		2,500 lbs	
HFS - SSP3636-01	36" x 36" x 3.75"	1,000 lbs	No
HFS - SSP3636-02		2,500 lbs	
HFS - SSP3636-05		5,000 lbs	
HFS - SSP4848-01	48" x 48" x 3.75"	1,000 lbs	No
HFS - SSP4848-02		2,500 lbs	
HFS - SSP4848-05*		5,000 lbs	Yes
HFS - SSP4848-10*		10,000 lbs	
HFS - SSP4860-05*	48" x 60" x 3.75"	5,000 lbs	Yes
HFS - SSP4860-10*		10,000 lbs	
HFS - SSP4872-05*	48" x 72" x 3.75"	5,000 lbs	Yes
HFS - SSP4872-10*		10,000 lbs	
HFS - SSP6060-05*	60" x 60" x 3.75"	5,000 lbs	Yes
HFS - SSP6060-10*		10,000 lbs	
HFS - SSP6060-20*		20,000 lbs	
HFS - SSP6084-10*	60" x 84" x 4.75"	10,000 lbs	Yes
HFS - SSP6084-20*		20,000 lbs	

*NTEP C.O.C.12-083



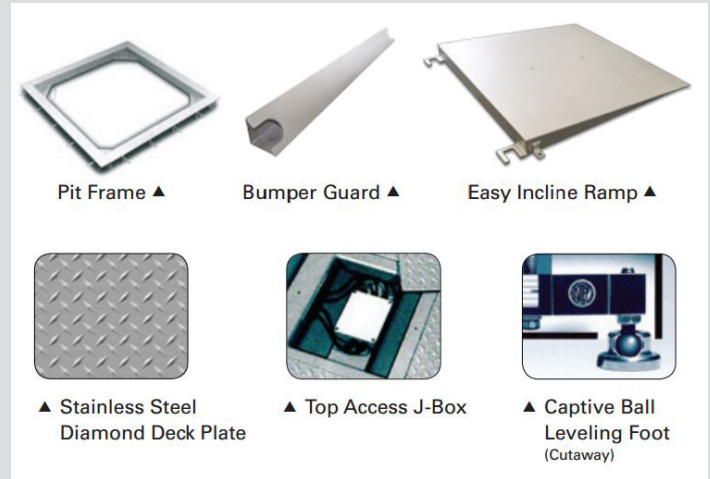
HFS-SS with Optional Poly Top



HFS-SS with Optional Ramps



- Stainless Steel Diamond Deck Plate
- Type 316 Stainless Steel Construction
- Captive Ball Leveling Feet
- Hardened Steel and Stainless Steel Hermetically Sealed Load Cells
- Locator Lag Down Brackets
- Easy six (6) Degree Incline Lock In Place Ramps - Designed to Fit All Four Sides of Any HFS SS Floor Scale.
- Ploy Top Lift Off Ramps Allow Maximum Access for Thorough Cleaning
- Easy Install Stainless Steel Pit Frame
- Bumper Guards
- Fork Lift Skid Package
- Running Gear
- Side/Top Access Onboard J-Box
- Indicator/Printer Stands
- FM Approved Load Cells/J-Box
- Custom Sizes and Capacities
- Quick Disconnect Cables and Factory Calibration



Legal Disclaimer



ALL PRODUCTS, PRODUCT SPECIFICATIONS AND DATA ARE SUBJECT TO CHANGE WITHOUT NOTICE.

Sentran, LLC, Incorporated, its affiliates, agents, and employees, and all persons acting on its or their behalf (collectively, "Sentran, LLC"), disclaim any and all liability for any errors, inaccuracies or incompleteness contained herein or in any other disclosure relating to any product. The product specifications do not expand or otherwise modify Sentran, LLC's terms and conditions of purchase, including but not limited to, the warranty expressed therein. Sentran, LLC makes no warranty, representation or guarantee other than as set forth in the terms and conditions of purchase. To the maximum extent permitted by applicable law, Sentran, LLC, disclaims (i) any and all liability arising out of the application or use of any product, (ii) any and all liability, including without limitation special, consequential or incidental damages, and (iii) any and all implied warranties, including warranties of fitness for particular purpose, non-infringement and merchantability. Information provided in datasheets and/or specifications may vary from actual results in different applications and performance may vary over time. Statements regarding the suitability of products for certain types of applications are based on Sentran, LLC's knowledge of typical requirements that are often placed on Sentran, LLC products. It is the customer's responsibility to validate that a particular product with the properties described in the product specification is suitable for use in a particular application. No license, express, implied, or otherwise, to any intellectual property rights is granted by this document, or by any conduct of Sentran, LLC. The products shown herein are not designed for use in life-saving or life-sustaining applications unless otherwise expressly indicated. Customers using or selling Sentran, LLC products not expressly indicated for use in such applications do so entirely at their own risk and agree to fully indemnify Sentran, LLC for any damages arising or resulting from such use or sale. Please contact authorized Sentran, LLC personnel to obtain written terms and conditions regarding products designed for such applications.



SENTRAN, LLC
4355 LOWELL STREET
ONTARIO, CA 91761-2225, U.S.A.
T: 909-605-1544 F: 909-605-6305
www.sentranllc.com

Innovative Measurement Solutions

