

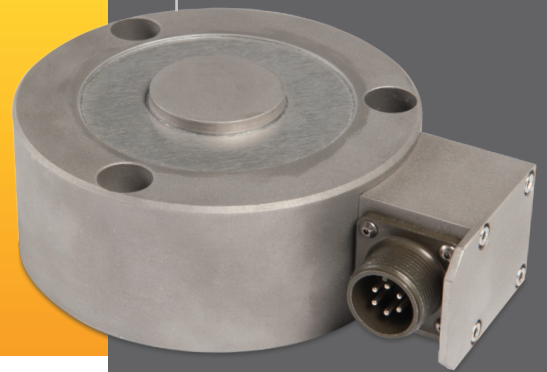


Low Profile Load Cell

PG Series

The PG Series is a high performance, low profile, strain gage load cell constructed of heat-treated stainless steel. The PG Series is designed to accurately measure compression loads ranging from 0-1,000 lbs. to 0-500,000 lbs.

The PG Series is a high performance, low profile, bonded foil strain gage load cell constructed of heat-treated stainless steel. The PG is designed to accurately measure compression forces in capacities ranging from 0-1,000 lbs. to 0-500,000 lbs. The multiple shear web sensing design and optional precision ground base produce excellent performance, a very low profile, and reduced sensitivity to eccentric and side loading effects. The high output and low deflection of the PG Series combine to yield a high dynamic response and superior output resolution for applications in structural analysis and materials testing. A fatigue rating of 10,000,000 cycles further defines the PG Series as an outstanding and versatile test and measurement solution. Dual bridge versions are available for redundancy and/or for discrete, simultaneous measurements. To achieve a sealing rating of IP67 (thoroughly sealed against airborne particles and the effects of immersion up to 1 meter.) proprietary, multi-redundant environmental barriers are incorporated, including sealed stainless steel covers to protect the strain gage area. Optional cable assemblies are available with mating connectors, including durable polyurethane or Teflon® jacketed cables that feature braided, tinned-copper shielding for mechanical protection and to minimize the effects of common industrial electrical noise, e.g. RFI and EMI. Other options include shunt calibration. The attributes of the PG Series make it ideal for measurements in the laboratory, structures testing, materials testing, and for general force measurements where a compact, low profile precision load cell solution is needed.



APPLICATIONS

- Compression Measurements
- Laboratory Test & Measurement
- Materials Testing Machines
- Dynamic Measurements
- Structural Analysis
- Fatigue Rated To 10⁷ Cycles

FEATURES

- 1,000 to 500,000 lbs. Capacities
- Compact Low Profile Design
- High Output - 3.0 mV/V (4.0 Optional)
- 0.1 Accuracy Class
- Shear Web Design
- High Frequency Response
- IP67 Environmental Sealing
- Stainless Steel Construction
- Dual Bridge Versions Available
- Two Year Warranty



For more information call **1-888-545-8988**

SENTRAN, LLC 4355 LOWELL STREET, ONTARIO, CA 91761, U.S.A.

888-545-8988 T: 909-605-1544 FAX: 909-605-6305 www.sentrانllc.com

PG Series Specifications

Innovative Measurement Solutions



PERFORMANCE

Rated capacities ⁽¹⁾ (lbs.)	1K, 2K, 3K, 4K, 5K, 7.5K, 10K, 20K, 30K, 50K, 75K, 100K, 150K, 200K, 300K, 400K, 500K
Rated Output (FSO)	3 mV/V
Output Tolerance	± 0.50 % R.O.
Combined Error Band	≤ 0.10 % FSO
Non-Linearity	≤ 0.10 % FSO
Hysteresis	≤ 0.08 % FSO
Non-Repeatability	≤ 0.03 % of load
Zero balance	± 1.0 % FSO
Creep (20 Minutes)	0.03% of Load

⁽¹⁾ ("K" = thousand)

MECHANICAL

Material	Stainless Steel
Finish	Natural
Safe overload	Compression 150% FSO Side Load 30% FSO
Ultimate overload	Compression 300% FSO Side Load: 50% FSO
Deflection	See Dimensions Page
Weight	See Dimensions Page
Mounting Bolt Torque	Torque Table

ELECTRICAL

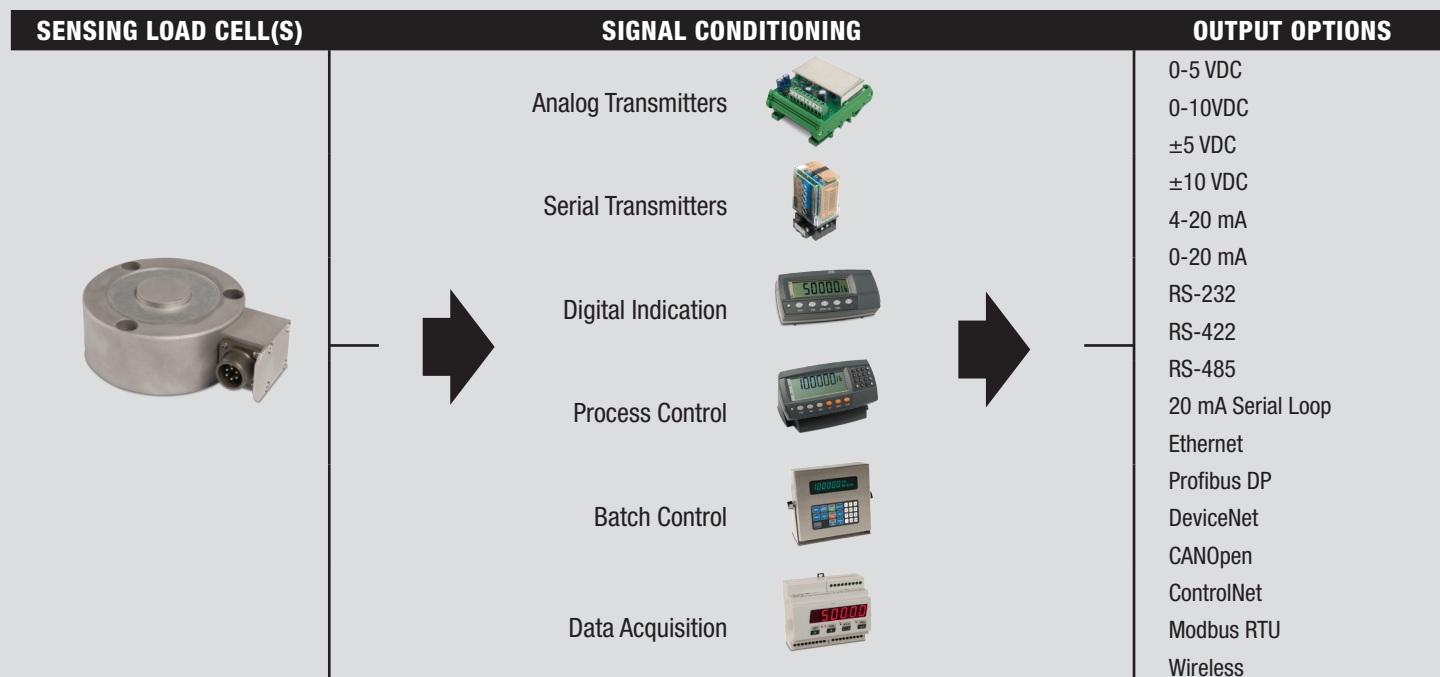
Input Impedance	375 ohms (nominal)
Output Impedance	350 ohms (nominal)
Insulation Resistance	>5000 Megohms @ 50VDC
Excitation Voltage	10 V AC/DC (15 V maximum)
Connector Pin Functions	+ Excitation (A) - Excitation (C) + Sense (B) - Sense (D) + Signal (F) - Signal (E)

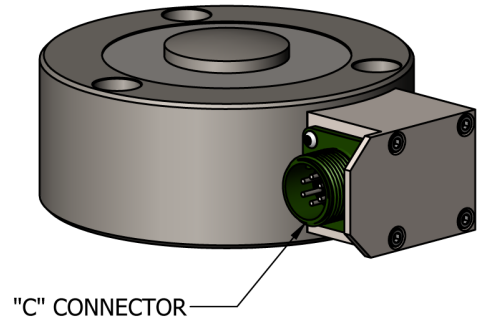
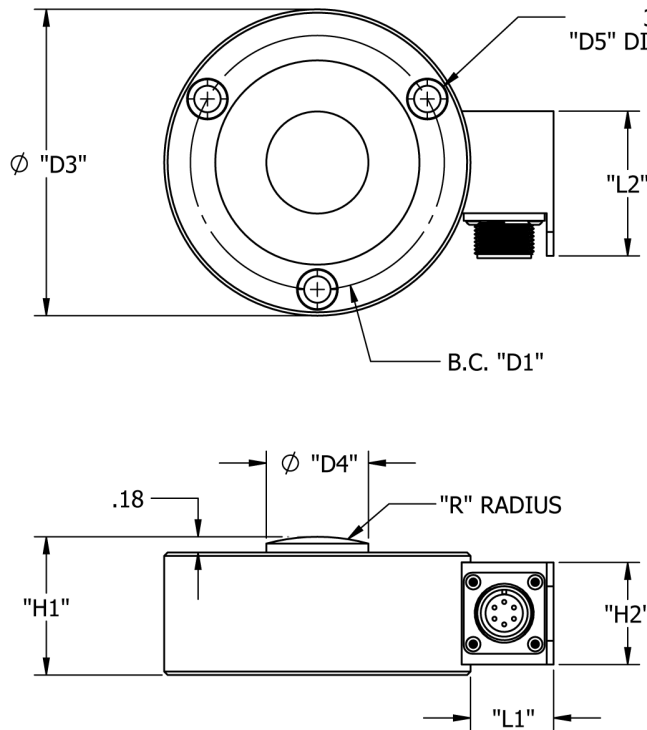
ENVIRONMENTAL

Temperature, Operating	-65 to +250 °F (-54 to +120°C)
Temperature, Compensated	15 to +115 °F (-9 to +46°C)
Temperature, Storage	-65 to +300 °F (-54 to +149°C)
Temperature Effects	Zero < 0.015% FSO/°F < 0.026% FSO/°C
Temperature Effects	Output < 0.0015% of Rdg./°F < 0.0026% Rdg./°C
Sealing	IP67; Multi-redundant; Limited Immersion Tolerance

The temperature ratings provided do not include the companion cable/connector assembly. If PUR or PVC cable is employed, the maximum operating temperature is 180°F (82°C)

PG Typical System Configuration

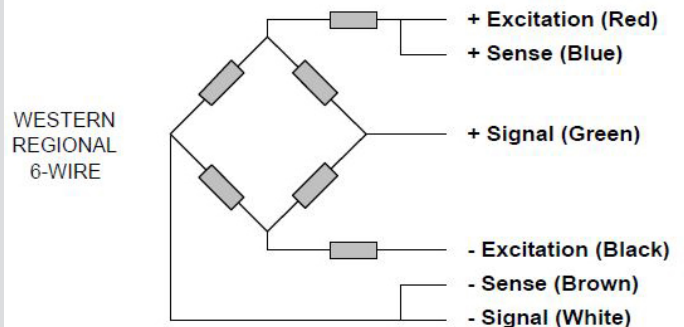
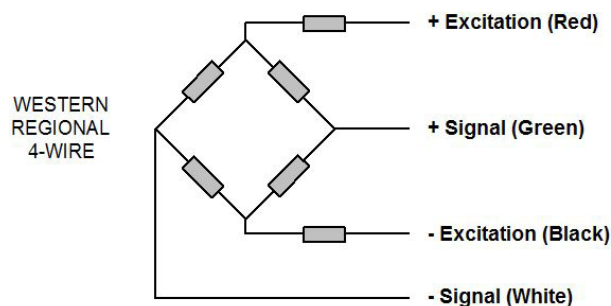




Dimensions in Inches

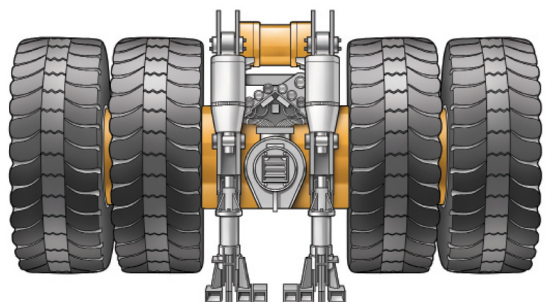
Capacity (LB)	H1	H2	H3	L1	L2	D1	D2	D3	D4	D5	R	C	Deflect	Weight
DIMENSIONS (INCHES)														
1K	1.18	0.75	0.34	0.82	1.25	2.250	0.328	3.00	0.56	0.485	2.5	MS3112-10-6P	0.002	1.5 LBS
2K, 3K, 4K, 5K	1.18	0.75	0.34	0.82	1.25	2.625	0.328	3.50	0.69	0.485	2.5	MS3112-10-6P	0.002	1.6 LBS
7.5K, 10K, 15K, 20K, 30K	2.00	1.50	0.40	1.25	2.00	3.790	0.390	4.50	1.50	0.578	6.0	MS3102E-14S-6P	0.003	6.4 LBS
50K, 75K, 100K,	2.00	1.50	0.40	1.25	2.00	3.790	0.390	4.50	1.50	0.578	6.0	MS3102E-14S-6P	0.004	6.6 LBS
150K, 200K	2.18	1.50	0.40	1.25	2.00	4.812	0.390	5.50	2.00	0.578	17.0	MS3102E-14S-6P	0.006	11.7 LBS
300K	2.68	1.50	0.40	1.25	2.00	6.000	0.390	7.00	2.50	0.578	17.0	MS3102E-14S-6P	0.007	23.8 LBS
400K	3.43	1.50	0.55	1.25	2.00	7.250	0.531	8.50	3.00	0.813	17.0	MS3102E-14S-6P	0.007	53.0 LBS
500K	4.50	1.50	0.78	1.25	2.00	9.500	0.781	11.00	4.75	1.188	24.0	MS3102E-14S-6P	0.008	90.4 LBS

PG Wiring Diagram

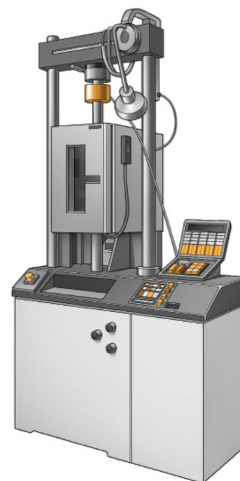




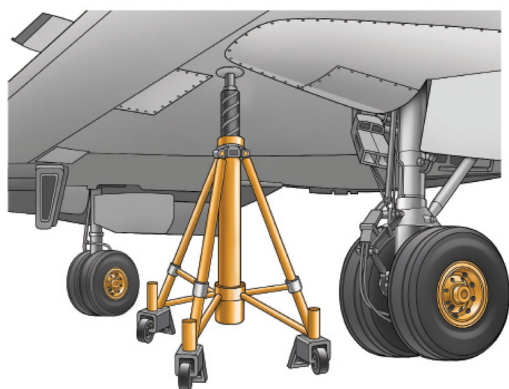
Mining Truck Jack Stand



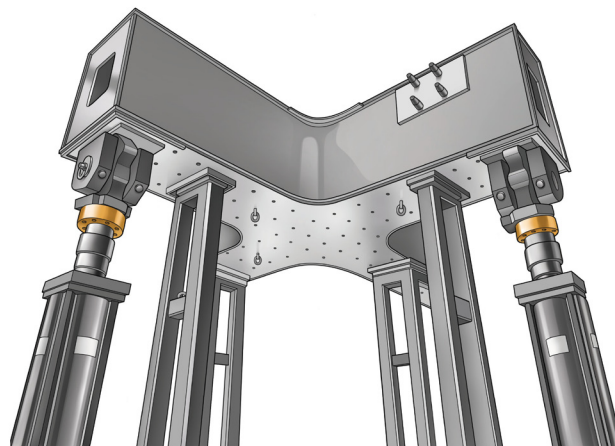
Environmental Test Load Stand



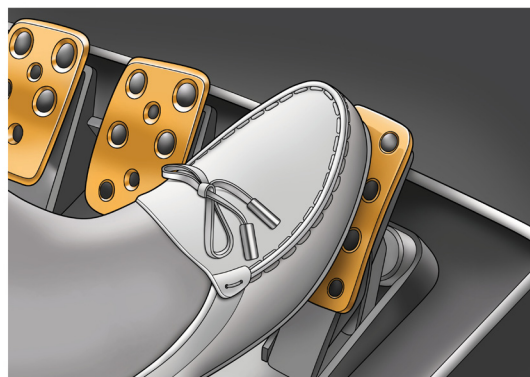
Aircraft Jack Stand



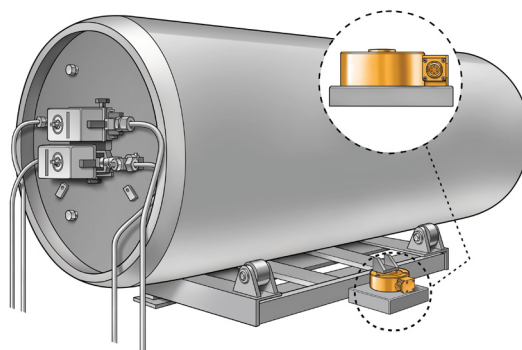
Structural Test Lab



Pedal Force Measurements



Tank Weighing Dispersion Control





- Base plates
- Load receivers
- High Temperature Operation (to 400°F)
- In-Line Analog or Serial Transmitters
- Display/Control Instrumentation
- Junction/Summing Boxes
- Wireless Operation
- MS Connectors
- Shunt Calibration
- Use and Installation Guide
- Custom and OEM Solutions

Application Recommendations / Suggestions

- The PG Series Low Profile Load Cells are designed to be loaded in compression.
- The PG Series Load Cells are ideal for single or multiple load cell measurements typical of test and measurement, weighing, dynamic measurements, load testing systems and similar applications. When used in multiples, it is recommended that matched outputs be specified for optimum performance. Multiple load cell systems should include a Sentran summing/junction box to correctly multiplex the load cell excitation and measurement signals.
- The most common loading method is to apply a force axially via the integral load button. Load introduction is best accomplished using devices such as a flat plate, a loading cup or similar interface providing a hardened mating surface to point load on the load button radius. The mating surface should be a slightly softer material than the load cell to prevent brinelling of the load button surface.
- Off-axis loads and shock loading should be avoided as degraded performance and/or damage to the load cell could occur.
- The support for the Load Cell must be rigid with the following characteristics:
 - At least two or three times more rigid than the load cell.
 - Possess a clean, flat and parallel surface to within 0.001in. TIR.
 - A recommended surface finish of 63 micro-in.
 - A minimum hardness of Rockwell B-100.
 - The mounting side of the Load Cell must mate to the support surface.
- Mounting bolt torque values indicated on the data sheet should be used. In multiple load cell applications involving four or more supports, use care to ensure that the load on each load cell support varies by no more than 20% over the complete loading range. Balancing of the load can be accomplished by using shims, or similar mechanical components to achieve satisfactory load distribution.
- PG Series Low Profile Load Cells are available in many capacity ranges. These load cells are designed to be used over the complete range of “no load” (0) up to the rated capacity. For example, 1,000 lbs. rated capacity PG Series are designed to be used for measurements within the range of 0 to 1,000 lbs. These load cells can be safely loaded to 150% of rated capacity without affecting the load cell performance within the capacity range.
- The reason for the variety of capacities is to allow the user to select the most ideal capacity for a given application. The most ideal capacity is one in which at least 80% of the capacity range is utilized at some point in the measurement process, without exceeding the rated capacity. This allows the load cell to deliver the highest signal to load ratio, and therefore the highest resolution and most stable measurement. There are other factors to consider, such as excitation voltage, but correct “sizing” of the load cell is the first step. Both the dead load and the live load need to be considered in determining the gross load and the load cell capacity.
- Contact Sentran’s expert Applications Specialists for additional professional guidance.

Commercial Information & Precautions

WARNING!

- Do not exceed specified Maximum Load Limits.
- The Safe Load Limit is the point to which normal loading will not cause the load cell to experience an excessive zero shift or a degradation in performance.
- Use reasonable care when applying load to any load cell. Load limits can be exceeded due to shock loading (i.e. dropping a load onto a load cell), off axis loading, side loading and similar loading conditions that are beyond design capabilities.
- The structural integrity of all load bearing components in any load cell system should be designed with safety redundant load paths. (Overload stops, overhead load arrestors, etc.)
- The surfaces to which the load cell(s) is attached and/or is reacting against must be of sufficient structural integrity to carry loads up to and exceeding the ultimate ratings of the load cell(s) being used, while also taking into account any companion hardware being used in conjunction with the load cell.
- To ensure optimum performance, all measuring system cabling should be run through dedicated conduit when available. Avoid proximity to electrical noise sources and use of "dirty" power sources.
- The load cell cable shield should be connected to a dedicated instrument ground point only.
- Force measurement and weighing applications have numerous application-specific considerations to be addressed both mechanically and electrically. Therefore, installation of all system components are the responsibility of the user and should always be approved by a qualified, professional engineer. Any information provided by Sentran, LLC is intended only as informational and does not constitute a formal recommendation for the use of any product for any application.
- Sentran offers application/installation/use guides on request for most standard products. Please contact your Sentran representative for assistance, or visit our technical library resource at www.sentranllc.com.

PERSONAL INJURY!

DO NOT USE these products as safety or emergency stop devices or in any other application where failure of the product could result in personal injury.

MISUSE OF DOCUMENTATION

- The information presented in this datasheet is for reference only. DO NOT USE this document as product installation information.
- Complete installation, operation and maintenance information is provided in the instructions supplied with each product.

Failure to comply with these instructions could result in death or serious injury.

Legal Disclaimer

ALL PRODUCTS, PRODUCT SPECIFICATIONS AND DATA ARE SUBJECT TO CHANGE WITHOUT NOTICE.

Sentran, LLC, Incorporated, its affiliates, agents, and employees, and all persons acting on its or their behalf (collectively, "Sentran, LLC"), disclaim any and all liability for any errors, inaccuracies or incompleteness contained herein or in any other disclosure relating to any product. The product specifications do not expand or otherwise modify Sentran, LLC's terms and conditions of purchase, including but not limited to, the warranty expressed therein. Sentran, LLC makes no warranty, representation or guarantee other than as set forth in the terms and conditions of purchase. To the maximum extent permitted by applicable law, Sentran, LLC, disclaims (i) any and all liability arising out of the application or use of any product, (ii) any and all liability, including without limitation special, consequential or incidental damages, and (iii) any and all implied warranties, including warranties of fitness for particular purpose, non-infringement and merchantability. Information provided in datasheets and/or specifications may vary from actual results in different applications and performance may vary over time. Statements regarding the suitability of products for certain types of applications are based on Sentran, LLC's knowledge of typical requirements that are often placed on Sentran, LLC products. It is the customer's responsibility to validate that a particular product with the properties described in the product specification is suitable for use in a particular application. No license, express, implied, or otherwise, to any intellectual property rights is granted by this document, or by any conduct of Sentran, LLC. The products shown herein are not designed for use in life-saving or life-sustaining applications unless otherwise expressly indicated. Customers using or selling Sentran, LLC products not expressly indicated for use in such applications do so entirely at their own risk and agree to fully indemnify Sentran, LLC for any damages arising or resulting from such use or sale. Please contact authorized Sentran, LLC personnel to obtain written terms and conditions regarding products designed for such applications.



SENTRAN

SENTRAN, LLC

4355 LOWELL STREET
ONTARIO, CA 91761-2225, U.S.A.
T: 909-605-1544 F: 909-605-6305

www.sentranllc.com

Innovative Measurement Solutions