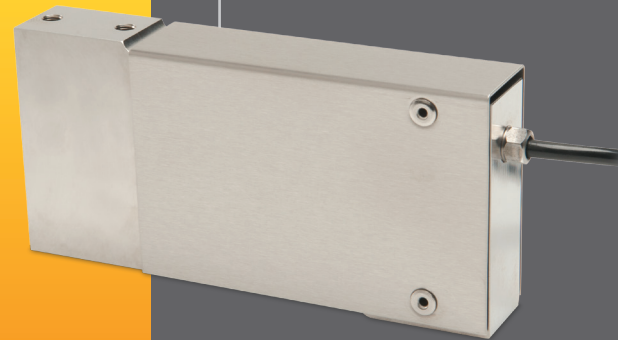




Single Point Load Cell

YL Series

The YL Series is a robust, high performance, bonded foil strain gage load cell. It is designed to accurately measure compression loads for single cell applications in capacity ranges of 0-25 lbs. to 0-1000 lbs.



The YL Series is a robust, high performance, bonded foil strain gage load cell constructed of nickel-plated alloy tool steel (YL1) or electro-polished stainless steel (YL3). The YL Series is designed to accurately measure compression loads for single cell applications in the capacity range of 0-25 lbs. to 0-1000 lbs. The field proven triple-beam design readily tolerates high moments induced by angular, eccentric and off-center loading, with minimal sensitivity to these anomalies. This load cell is Harsh Environment Sealed (IP67-Limited Immersion) by virtue of proprietary, multi-redundant barriers uniquely integrated to protect all internal components. Additional protection is provided by the stainless steel covers, which also serves to enhance the aesthetics of the YL Series as a component of an assembly or measurement system. The cable is a durable polyurethane jacketed cable, with a tinned-copper braided shield for mechanical protection and to minimize the effects of RFI and EMI. The attributes of the YL Series makes it an ideal choice for low to medium range force measurements, small hopper and platform weighing, conveyor scales and O.E.M. weighing situations where an exceptionally rugged moment compensated, well sealed, and high performance load cell solution is needed. Non-standard or custom configurations can be accommodated consistent with solutions-driven requirements.



APPLICATIONS

- Hopper & Netweighing
- Platform and Belt Conveyor Scales
- Checkweighing
- High Moment/Off-Center Loading
- OEM and VAR Solutions

FEATURES

- 25 to 1000 lbs. Capacities
- Low Profile/Compact Size
- Extremely Durable
- 0.03% Accuracy Class
- High Temperature Versions
- Steel or Stainless Steel Element
- IP67 Environmental Sealing
- Two Year Warranty

For more information call **1-888-545-8988**

SENTRAN, LLC 4355 LOWELL STREET, ONTARIO, CA 91761, U.S.A.
888-545-8988 T: 909-605-1544 FAX: 909-605-6305 www.sentranllc.com

YL Series Specifications

Innovative Measurement Solutions



PERFORMANCE

Rated capacities (lbs.)	25, 50, 100, 200, 400, 500, 1,000
Rated Output (FSO)	2 mV/V
Output Tolerance	±25/-10 % R.O
Combined Error Band	≤ 0.03 % FSO
Non-Linearity	≤ 0.03 % FSO
Hysteresis	≤ 0.02 % FSO
Non-Repeatability	≤ 0.01 % FSO
Zero Balance	± 1 % FSO
Creep (30 Minutes)	≤ 0.03 % of load
Zero Return (30 Minutes)	0.01 % of load
Moment Sensitivity 1,000 lbs	0.005 % FSO/Inch 0.007 % FSO/Inch
Maximum Moment	See Dimensions Page
Ultimate Moment	200 % of Maximum Moment

MECHANICAL

Material	Stainless steel
Finish	Natural
Safe overload	Compression 150 % FSO Side Load 30% FSO
Ultimate overload	Compression 300% FSO Side Load: 100% FSO
Deflection	See Dimensions Table
Weight	See Dimensions Table
Mounting Bolt Torque	Torque Table

ELECTRICAL

Input Impedance	400 ± 35 ohms
Output Impedance	352 ± 3 ohms
Insulation Resistance	>5000 Megohms @ 50VDC
Excitation Voltage	10 V AC/DC (15 V maximum)
Cable Color Code	+ Excitation (red) - Excitation (black) + Signal (green) - Signal (white) Shield (natural)
Cable Type	4-conductor, 22 AWG, PUR jacket, Tinned Copper Braid, Diameter: 0.220"
Cable Length	See Dimensions Table
Cable Termination	Finished Conductors
Cable Seal	Epoxy; Conformal

ENVIRONMENTAL

Temperature, Operating	0 to +150 °F (-18 to +66°C)
Temperature, Compensated	14 to +104 °F (-10 to +40°C)
Temperature Effects	Zero < 0.015% FSO/°F < 0.0026% FSO/°C
Temperature Effects	Output < 0.0008% of Rdg./°F < 0.0014% Rdg./°C
Temperature, Storage	-40 to +170 °F (-40 to +77°C)
Sealing	IP67, Multi-redundant; Limited Immersion Tolerance

YL Typical System Configuration

SENSING LOAD CELL(S)



SIGNAL CONDITIONING

Analog Transmitters



Serial Transmitters



Digital Indication



Process Control



Batch Control

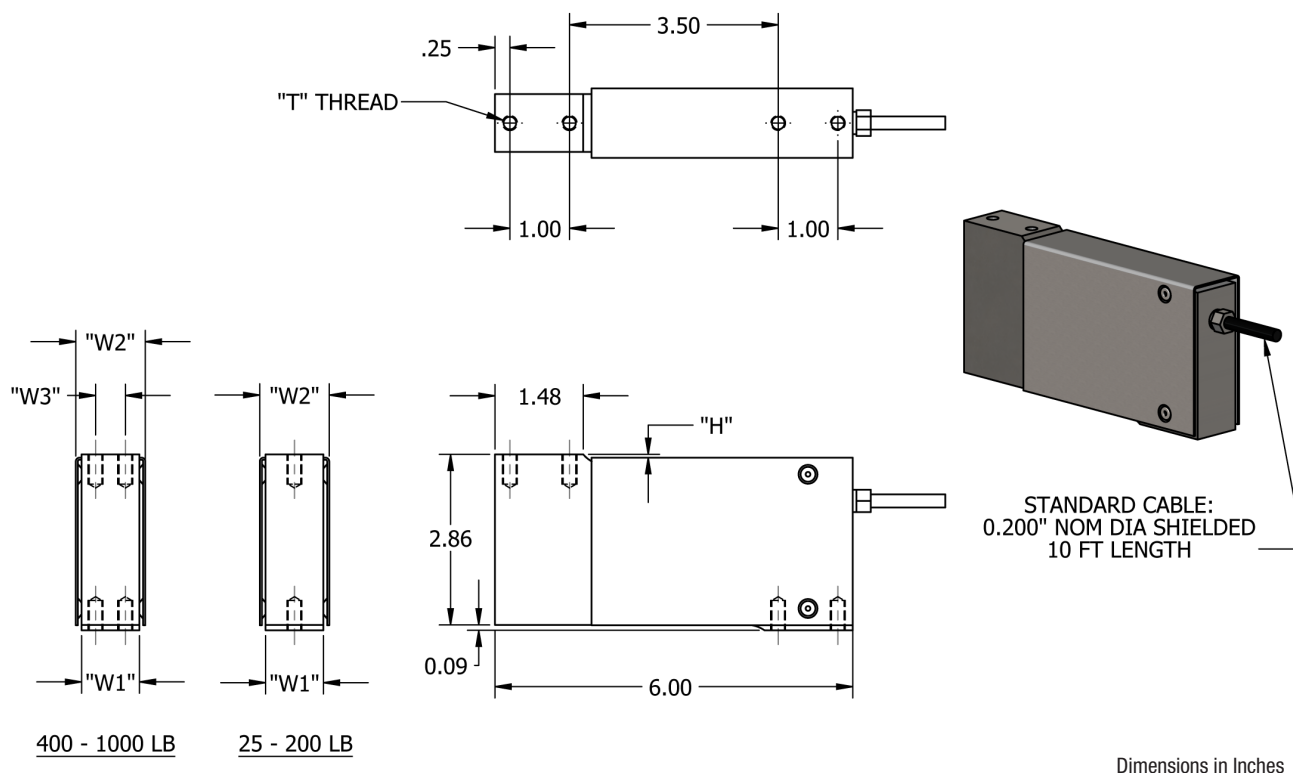


Data Acquisition



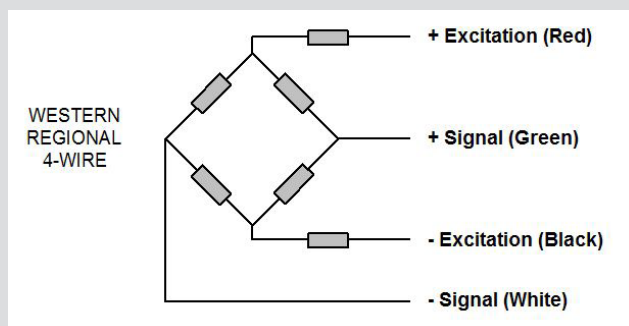
OUTPUT OPTIONS

0-5 VDC
0-10VDC
±5 VDC
±10 VDC
4-20 mA
0-20 mA
RS-232
RS-422
RS-485
20 mA Serial Loop
Ethernet
Profibus DP
DeviceNet
CANOpen
ControlNet
Modbus RTU
Wireless



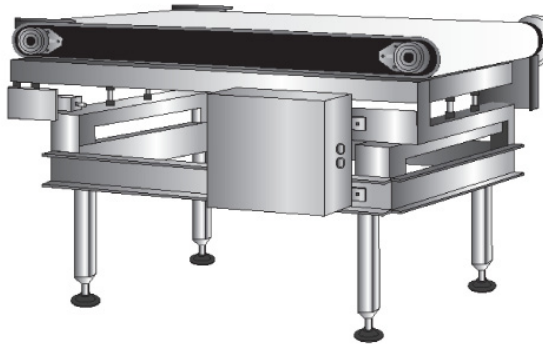
Capacity (LBS)	Maximum Moment (Inches X Capacity)	H	W1	W2	W3	T	Deflect	Weight
DIMENSIONS (INCHES)								
25	7	0.04	0.97	1.17	-	1/4-28 UNF-2B X 0.5 DP (4 places)	0.016"	4.0 LBS
50	7	0.04	0.97	1.17	-	1/4-28 UNF-2B X 0.5 DP (4 places)	0.013"	4.0 LBS
100	5	0.04	0.97	1.17	-	1/4-28 UNF-2B X 0.5 DP (4 places)	0.013"	4.0 LBS
200	5	0.04	0.97	1.17	-	1/4-28 UNF-2B X 0.5 DP (4 places)	0.015"	4.0 LBS
400	7	0.04	0.97	1.17	0.50	1/4-28 UNF-2B X 0.5 DP (4 places)	0.023"	5.0 LBS
500	7	0.04	0.97	1.17	0.50	1/4-28 UNF-2B X 0.5 DP (4 places)	0.023"	5.0 LBS
1,000	6	0.18	1.50	1.75	1.00	5/16-24 UNF-2B X 0.7 DP (8 places)	0.016"	5.5 LBS

YL Wiring Diagram

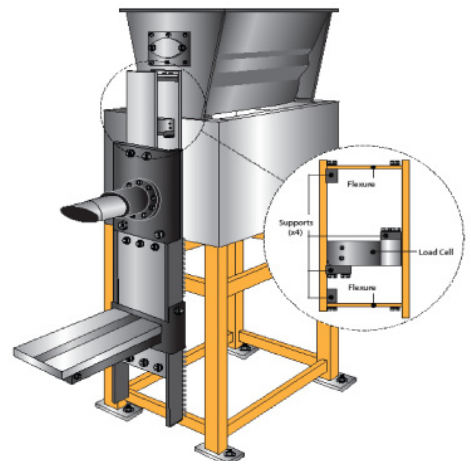




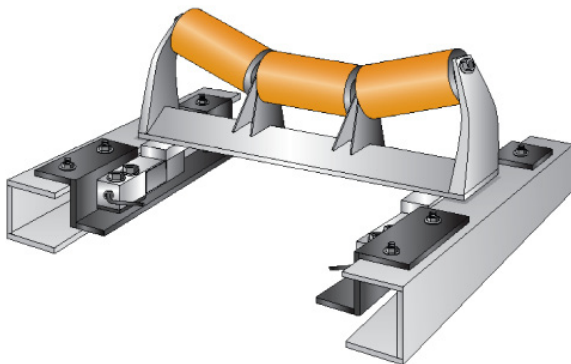
Check Weighing



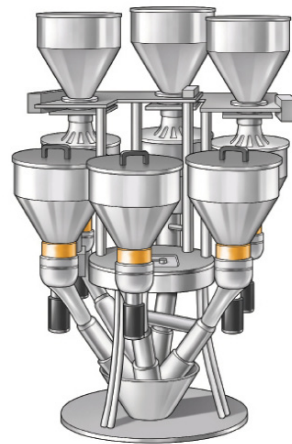
Automated Bagging



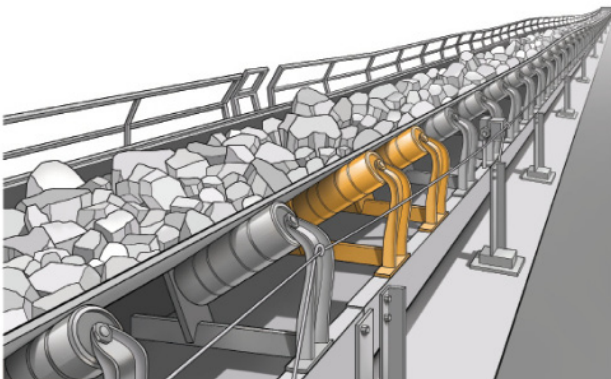
Conveyor Belt Scale



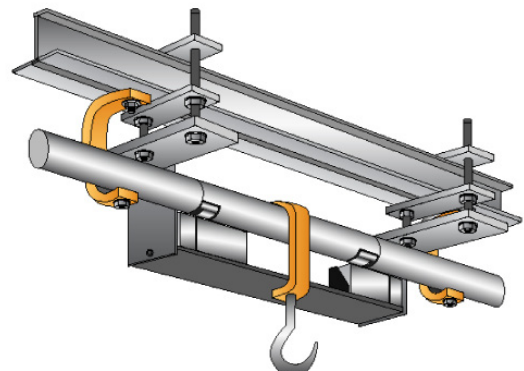
Gravimetric Multi Component Feeder



Volume and Rate Control



Monorail Scale



Legal Disclaimer



ALL PRODUCTS, PRODUCT SPECIFICATIONS AND DATA ARE SUBJECT TO CHANGE WITHOUT NOTICE.

Sentran, LLC, Incorporated, its affiliates, agents, and employees, and all persons acting on its or their behalf (collectively, "Sentran, LLC"), disclaim any and all liability for any errors, inaccuracies or incompleteness contained herein or in any other disclosure relating to any product. The product specifications do not expand or otherwise modify Sentran, LLC's terms and conditions of purchase, including but not limited to, the warranty expressed therein. Sentran, LLC makes no warranty, representation or guarantee other than as set forth in the terms and conditions of purchase. To the maximum extent permitted by applicable law, Sentran, LLC, disclaims (i) any and all liability arising out of the application or use of any product, (ii) any and all liability, including without limitation special, consequential or incidental damages, and (iii) any and all implied warranties, including warranties of fitness for particular purpose, non-infringement and merchantability. Information provided in datasheets and/or specifications may vary from actual results in different applications and performance may vary over time. Statements regarding the suitability of products for certain types of applications are based on Sentran, LLC's knowledge of typical requirements that are often placed on Sentran, LLC products. It is the customer's responsibility to validate that a particular product with the properties described in the product specification is suitable for use in a particular application. No license, express, implied, or otherwise, to any intellectual property rights is granted by this document, or by any conduct of Sentran, LLC. The products shown herein are not designed for use in life-saving or life-sustaining applications unless otherwise expressly indicated. Customers using or selling Sentran, LLC products not expressly indicated for use in such applications do so entirely at their own risk and agree to fully indemnify Sentran, LLC for any damages arising or resulting from such use or sale. Please contact authorized Sentran, LLC personnel to obtain written terms and conditions regarding products designed for such applications.



SENTRAN, LLC

4355 LOWELL STREET
ONTARIO, CA 91761-2225, U.S.A.
T: 909-605-1544 F: 909-605-6305

www.sentranllc.com

Innovative Measurement Solutions