

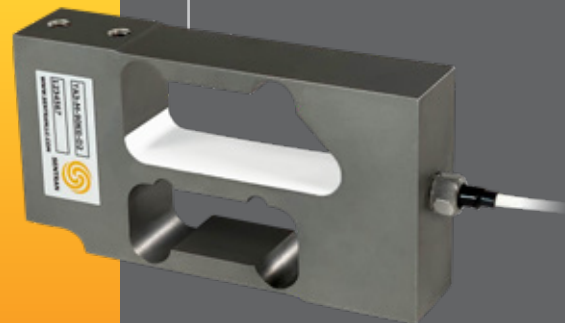


SENTRAN

Single Point Load Cell

YA3-M-D2 Series

The YA3-M-D2 Series is a moment compensated load cell constructed of heat treated stainless steel. YA3-M-D2 is designed to accurately measure tension and compression forces for applications ranging from 0-10 KG to 0-90 KG.



The YA3-M-D2 Series is a moment compensated load cell constructed of heat treated stainless steel. YA3-M-D2 is designed to accurately measure tension and compression forces for applications ranging from 0-10 KG to 0-90 KG with an expanded operating temperature range of 400°F. The YA3-M-D2 Series features a unique three-beam guided cantilever design that readily tolerates moments induced by angular, eccentric, or off-center loading, with minimal sensitivity to these extraneous loads, producing excellent performance. The three-beam design also yields better performance for temperature gradients in varying temperature environments. The YA3-M-D2 Series is specifically designed to reject the undesirable measurement effects of off-center loading, a requirement for platform scale applications. The load cell is environmentally sealed to IP67 (limited immersion) by virtue of proprietary multi-redundant barriers uniquely integrated to protect all internal components. The integral premium instrumentation grade cable features a premium Teflon jacket over a tinned-copper braided shield for superior mechanical protection and for minimizing the unwanted electrical effects of RFI and EMI. The attributes of the YA3-M-D2 Series make it convenient for weighing bins and hoppers. The YA3-M-D2 Series is an ideal choice for plastic injection molding hoppers, material handling, packaging, or bagging scale applications where a precision, versatile, high temperature, moment compensated load cell solution is required.



For more information call **1-888-545-8988**

SENTRAN, LLC 4355 LOWELL STREET, ONTARIO, CA 91761, U.S.A.
888-545-8988 T: 909-605-1544 FAX: 909-605-6305 www.sentranllc.com

APPLICATIONS

- Compression Measurements
- High Moment/Off-Center Loading
- Low Force Measurements
- Platform Scales
- Hopper & Net Weight Weighing
- OEM and VAR Solutions

FEATURES

- 10 KG to 90 KG Capacities
- 400°F High Temp Operation
- 0.02% Accuracy Class
- 2 mV/V Full Scale Output
- 10 FT Teflon Cable
- Standard Profile - 2.5" Height
- IP67 Environmental Sealing
- Stainless Steel Construction
- Three-beam Cantilever Design
- Universal - Tension and Compression
- Moment Compensated

YA3-M-D2 Series Specifications

Innovative Measurement Solutions



PERFORMANCE

Rated Capacities (KG)	3, 5, 7, 10, 15, 20, 30, 50, 90
Rated Output (FSO)	2 mV/V
Output Tolerance	±10 % R.O
Combined Error Band	≤ 0.03 % FSO
Non-Linearity	≤ 0.03 % FSO
Hysteresis	≤ 0.03 % FSO
Non-Repeatability	≤ 0.01 % FSO
Zero Balance	≤ 5 % FSO
Creep (30 Minutes)	≤ 0.05 % of load
Moment Sensitivity	≤ 0.018 % Applied Load Per Inch
Maximum Moment	10KG to 20KG: 6 Inch x Capacity 50KG to 90KG: 4 Inch x Capacity
Ultimate Moment	200 % of Maximum Moment

MECHANICAL

Load Cell Material	Stainless Steel
Load Cell Finish	Natural
Safe Overload	Compression 150% FSO Side Load 30% FSO
Ultimate Overload	Compression 300% FSO Side Load: 100% FSO
Deflection	See Dimensions Page
Weight	See Dimensions Page

ELECTRICAL

Input Impedance	350 ± 20 Ohms
Output Impedance	350 ± 3 Ohms
Insulation Resistance	>5000 Megohms
Excitation Voltage	10 V AC/DC (15 V maximum)
Cable Color Code	+ Excitation (Green) - Excitation (Black) + Signal (Red) - Signal (White) Shield (Natural)
Cable Type	4-conductor, 26 AWG, Teflon® jacket, Tinned Copper Braid Shield, Diameter: 0.142"
Cable Length	See Dimensions Table
Cable Termination	Finished Conductors
Cable Seal	Epoxy; Conformal

ENVIRONMENTAL

Temperature, Operating	0 to +400°F (-18 to +204°C)
Temperature, Compensated	75 to 400°F (-24 to +204°C)
Temperature, Storage	-40 to +400°F (-40 to +204°C)
Temperature Effects	Zero < 0.003% FSO/°F < 0.005% FSO/°C
Temperature Effects	Output < 0.0008% of Rdg./°F < 0.0014% Rdg./°C
Sealing	IP67, Multi-redundant; Low Pressure Resistant

YA3-M-D2 Series Typical System Configuration

SENSING LOAD CELL(S)



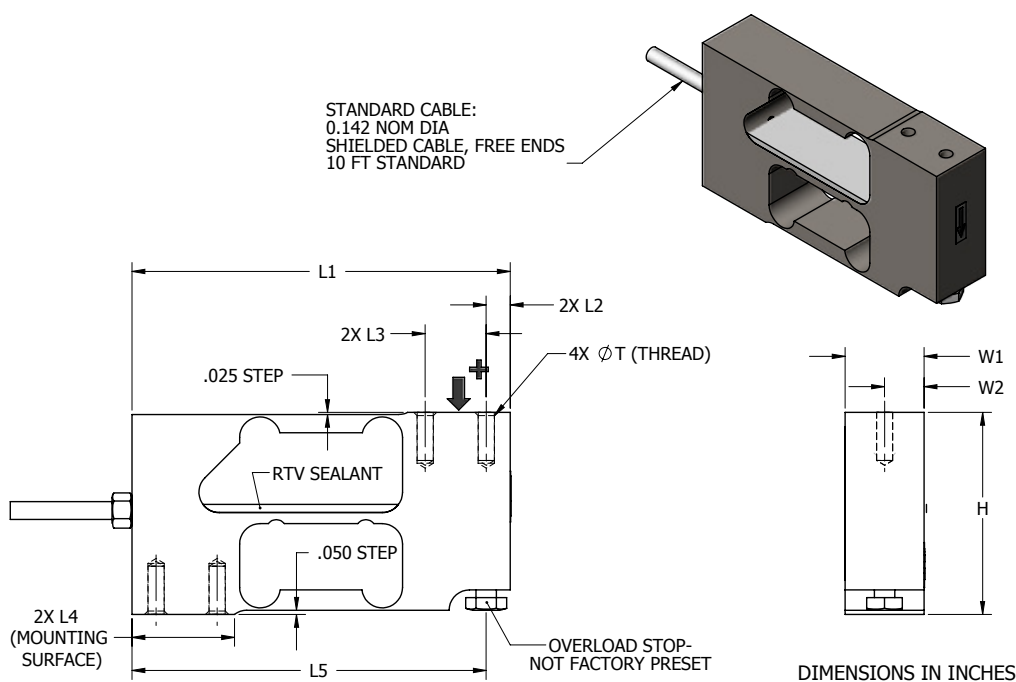
SIGNAL CONDITIONING

Amplifier/Transmitter JF Series	
Amplifier/ Transmitter JA Series	
Digital Indicator 250 Series	
Digital Indicator 250SS Series	
Digital Indicator/Controller KD3 Series	
Digital Indicator/Controller KD4 Series	

OUTPUT OPTIONS

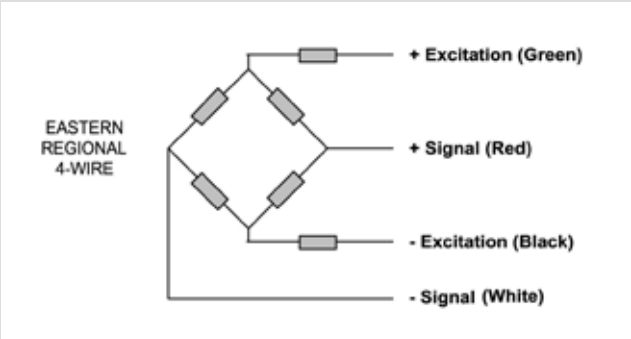
0-5 VDC
0-10VDC
±5 VDC
±10 VDC
4-20 mA
0-20 mA
RS-232
RS-422
RS-485
20 mA Serial Loop
Ethernet
Profibus DP
DeviceNet
CANOpen
ControlNet
Modbus RTU
Wireless

YA3-M-D2 Dimensions



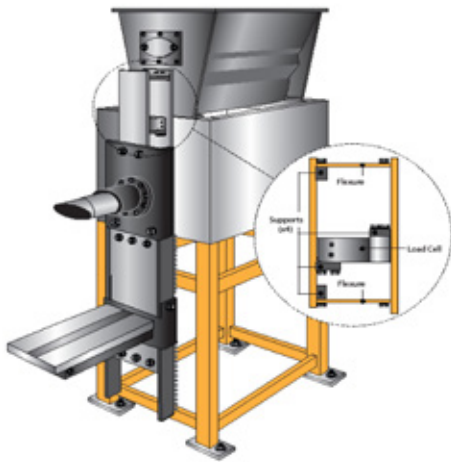
Capacity (KG)	H	L1	L2	L3	L4	L5	W1	W2	T(Thread)	Deflect	Weight
10, 20, 50, 90	2.48	4.64	0.30	0.75	1.26	4.35	1.00	0.50	M6 x 1.0 (12MM DP)	0.015	2.0 LB

YA3-M-D2 Wiring Diagram





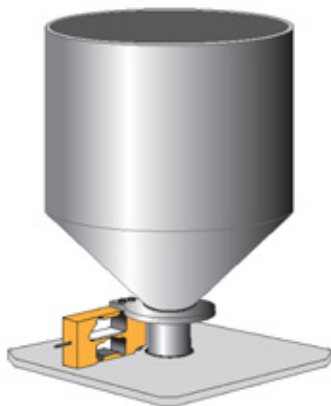
Automated Bagging



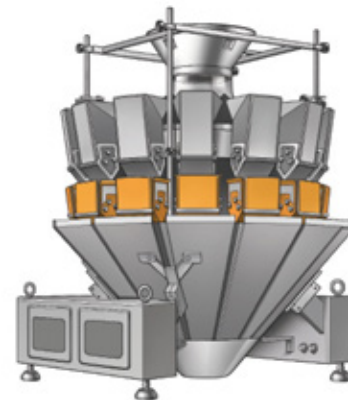
Loss-In-Weight



Feed Hopper



Net Weighing



Gravimetric Multi-Component Feeder



Precious Gas Scale





- In-Line Analog or Serial Transmitters
- Display/Control Instrumentation
- Junction/Summing Boxes
- Wireless Operation
- MS Connectors
- Shunt Calibration
- Use and Installation Guide
- Custom and OEM Solutions

Application Recommendations / Suggestions

- The Y Series Load Cells are designed for compression force measurement applications. These load cells were developed specifically to tolerate unusually high moments resulting from off-center loading in single load cell platform applications. Subsequently, the unique characteristics of this design lent to its adaptation to small hopper applications, monorail scales, belt conveyor scales and packaging machine applications, to name a few. The Y Series unique element geometry delivers exceptional performance and readily tolerates moments induced by angular, eccentric and off-center loading, with minimal sensitivity to these anomalies.
- Y Series load cells are cantilever beams, meaning they are rigidly fixed on a suitable mounting surface on one end and the load is introduced to the opposite end of the beam. The most common loading methods are via a bolt-on platform or bracket.
- For optimum performance the load cell should be securely mounted to a flat, rigid surface. Some Y Series load cells have built-in mounting bosses, while others require spacers that serve to define the beam reaction point and provide clearance for the load cell to deflect freely. Similar provisions are required for the loading end as well.
- Y Series load cells are generally available in relatively low capacity ranges. The advantage is their ability to resolve very low forces. This excellent sensitivity also makes the load cell more susceptible to unintended overloads, often caused by mis-handling. Therefore care must be taken when handling, installing and using these load cells to guard against overloading, which in many cases can render the load cell unusable. Some versions incorporate integral overload protection for compression, tension, or both. Commonly, overload protection is incorporated in an given application to protect the load cell from excessive deflection due to static or dynamic force inputs.
- Moment compensated load cells have specific maximums for moment sensitivity and moment tolerance. These published specifications should never be exceeded. Maintaining a center of gravity as close to centerline as possible is always preferable.
- These load cells are designed to be used over the complete range of “no load” (0) up to the rated capacity. For example, 10 lbs. rated capacity Y Series load cells are designed to be used for measurements within the range of 0 to 10 lbs. These load cells can be safely loaded to 150% of rated capacity without affecting the load cell performance within the capacity range.
- The reason for the variety of capacities and configurations is to allow the user to select the most ideal capacity, geometry and sealing level for a given application. The most ideal capacity is one in which at least 80% of the capacity range is utilized at some point in the measurement process, without exceeding the rated capacity. This allows the load cell to deliver the highest signal to load ratio, and therefore the highest resolution and most stable measurement. There are other factors to consider, such as excitation voltage, but correct “sizing” of the load cell is the first step. Both the dead load and the live load need to be considered in determining the gross load and the load cell capacity.
- Contact Sentran's expert Applications Specialists for additional professional guidance and technical support documentation.

Commercial Information & Precautions

- Do not exceed specified Maximum Load Limits.
- The Safe Load Limit is the point to which normal loading will not cause the load cell to experience an excessive zero shift or a degradation in performance.
- Use reasonable care when applying load to any load cell. Load limits can be exceeded due to shock loading (i.e. dropping a load onto a load cell), off axis loading, side loading and similar loading conditions that are beyond design capabilities.
- The structural integrity of all load bearing components in any load cell system should be designed with safety redundant load paths. (Overload stops, overhead load arrestors, etc.)
- The surfaces to which the load cell(s) is attached and/or is reacting against must be of sufficient structural integrity to carry loads up to and exceeding the ultimate ratings of the load cell(s) being used, while also taking into account any companion hardware being used in conjunction with the load cell.
- To ensure optimum performance, all measuring system cabling should be run through dedicated conduit when available. Avoid proximity to electrical noise sources and use of "dirty" power sources.
- The load cell cable shield should be connected to a dedicated instrument ground point only.
- Force measurement and weighing applications have numerous application-specific considerations to be addressed both mechanically and electrically. Therefore, installation of all system components are the responsibility of the user and should always be approved by a qualified, professional engineer. Any information provided by Sentran, LLC is intended only as informational and does not constitute a formal recommendation for the use of any product for any application.
- Sentran offers application/installation/use guides on request for most standard products. Please contact your Sentran representative for assistance, or visit our technical library resource at www.sentranllc.com.

Legal Disclaimer



ALL PRODUCTS, PRODUCT SPECIFICATIONS AND DATA ARE SUBJECT TO CHANGE WITHOUT NOTICE.

Sentran, LLC, Incorporated, its affiliates, agents, and employees, and all persons acting on its or their behalf (collectively, "Sentran, LLC"), disclaim any and all liability for any errors, inaccuracies or incompleteness contained herein or in any other disclosure relating to any product. The product specifications do not expand or otherwise modify Sentran, LLC's terms and conditions of purchase, including but not limited to, the warranty expressed therein. Sentran, LLC makes no warranty, representation or guarantee other than as set forth in the terms and conditions of purchase. To the maximum extent permitted by applicable law, Sentran, LLC, disclaims (i) any and all liability arising out of the application or use of any product, (ii) any and all liability, including without limitation special, consequential or incidental damages, and (iii) any and all implied warranties, including warranties of fitness for particular purpose, non-infringement and merchantability. Information provided in datasheets and/or specifications may vary from actual results in different applications and performance may vary over time. Statements regarding the suitability of products for certain types of applications are based on Sentran, LLC's knowledge of typical requirements that are often placed on Sentran, LLC products. It is the customer's responsibility to validate that a particular product with the properties described in the product specification is suitable for use in a particular application. No license, express, implied, or otherwise, to any intellectual property rights is granted by this document, or by any conduct of Sentran, LLC. The products shown herein are not designed for use in life-saving or life-sustaining applications unless otherwise expressly indicated. Customers using or selling Sentran, LLC products not expressly indicated for use in such applications do so entirely at their own risk and agree to fully indemnify Sentran, LLC for any damages arising or resulting from such use or sale. Please contact authorized Sentran, LLC personnel to obtain written terms and conditions regarding products designed for such applications.



SENTRAN, LLC

4355 LOWELL STREET
ONTARIO, CA 91761-2225, U.S.A.
T: 909-605-1544 F: 909-605-6305

www.sentranllc.com

Innovative Measurement Solutions